

Ask us about:

Professionally carved
ice sculptures



Elegant iceware

Vases



Ice bars

Size:

4" thick, 19.5" wide, 12" deep

Weight:

65 lbs.

Capacity:

7 quarts

How long will it last?

12 to 15 hours

Where does the water go
when it melts?

The bowl sits on a styrofoam stand
containing a reservoir that collects the
water as the bowl melts.

A light fixture built into the stand
illuminates the bowl from the bottom.
A slip-cover over the base provides the
finishing touch to the display.



Hand-Carved Magical Ice Sculptures for all Occasions

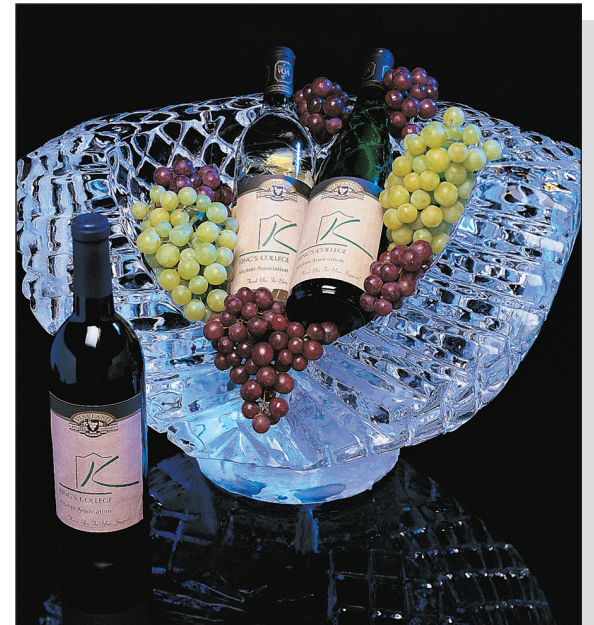
1939 Ave B North

Saskatoon, Saskatchewan S7L 4K9

Ph 306-653-7175 • Fax 306-653-7176

info@fireandicecreations.ca

www.fireandicecreations.ca



Brides, parties, party planners. Rental operators, caterers, social convenors. Florists, hotels and club owners. All will be interested in the ice bowl.

Bowl designs are not limited to wedding themes. Bar Mitzvahs, Bat Mitzvahs, birthdays, anniversaries, corporate functions and fundraising activities are just some of the events where an ice bowl adds an elegant touch.

Bells & Bowls

Nor are they restricted to floral motifs. Toy tractors and industrial equipment, company logos, jewelry, coins, fish hooks, golf balls and tees, sea shells and even medical accessories – the list of items that can be worked into an ice bowl design is virtually endless. Or, left clear, ice bowls can be hand-carved to form a Waterford crystal effect. Ice bowls usually hold punch, but they also make a unique serving vessel for seafood, salads or fresh fruit.



The ice bowl has many applications. Primarily used for punch at wedding receptions, it's also an effective wine cooler and makes an eye-catching seafood and fruit display. Two bowls can be combined and carved into a golf ball, creating a popular 50/50 draw feature for golf tournaments.